

# BENICIA PARKS, TRAILS, & OPEN SPACE MASTER PLAN

EXISTING CONDITIONS MAPPING MEMO

APRIL 2021



# MAPPING PROCESS

Recreation opportunities and the natural setting of bay and hills are integral to quality of life in Benicia. As the City of Benicia updates its Parks, Trails & Open Space Master Plan, it is important to understand the parks system as it is today. This map series serves in conjunction with a detailed park-by-park site assessment completed in March 2021 to give us that understanding.

Maps presented here show how our parks and open spaces relate to the larger context and how they work together as recreation assets serving neighborhoods. Zooming in closer, maps help us understand the City's open space network on the hillsides and the pattern of small local parks, regional trail segments, and bayside access points in the downtown/waterfront area.

# LIST OF MAPS

1. BENICIA IN CONTEXT
2. LIST OF PARKS
3. PARK CLASSIFICATIONS
4. PARK AMENITIES
5. PARK CONDITIONS
6. REGIONAL TRAILS & CITY BIKE NETWORK
7. SERVICE AREAS, CITYWIDE
8. SERVICE AREAS, CONTEXT
9. OWNERSHIP, ACCESS, PROTECTED AREAS
10. HILLSIDE OWNERSHIP & ACCESS
11. WATERFRONT PARKS AND MID-CENTURY SEA LEVEL RISE
12. ECOLOGY
13. POTENTIAL HAZARDS
14. ZONING MAP

# BENICIA PARKS IN CONTEXT

NOT TO SCALE



SAN JOAQUIN RIVER DELTA



SOLANO OPEN SPACE

VALLEJO

VALLEJO-BENICIA  
GROWTH BUFFER

**BENICIA**

SUISUN MARSH PROTECTED AREA

SAN PABLO BAY

SUISUN BAY

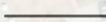
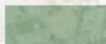
CROCKETT

SAN FRANCISCO BAY



CARQUINEZ REGIONAL SHORELINE  
CARQUINEZ STRAIT

MARTINEZ

-  City of Benicia Boundary
-  Parks

CONCORD

# LIST OF PARKS

- Park
- Zoned for Open Space
- City of Benicia Boundary
- Street End Parks

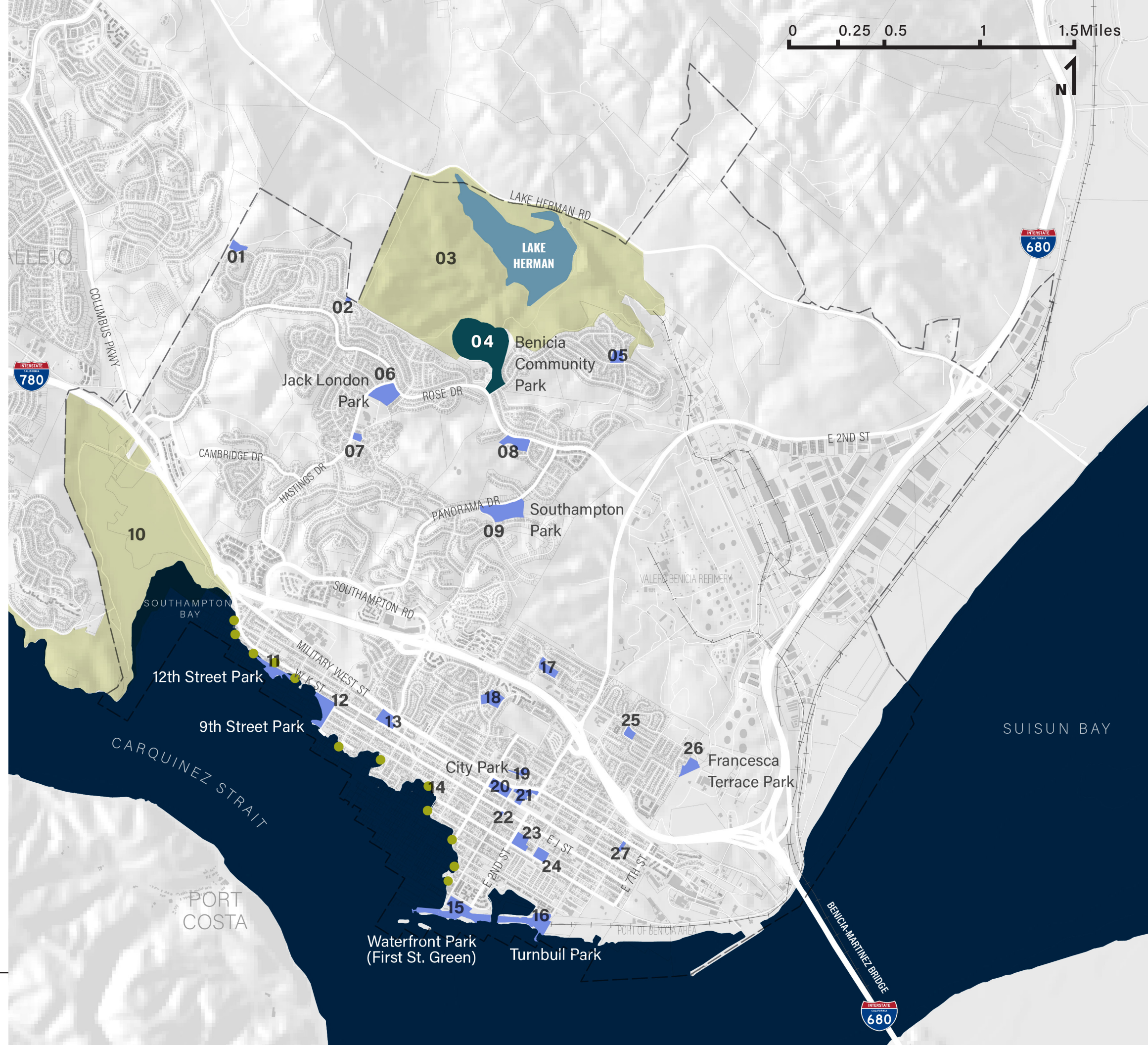
- 01 Channing Circle Park
- 02 Gateway Park
- 03 Lake Herman Regional Park
- 04 Benicia Community Park
- 05 Water's End Park
- 06 Jack London Park
- 07 Solano Park
- 08 Frank Skillman Park
- 09 Southampton Park
- 10 Benicia State Recreation Area (not assessed)
- 11 Matthew Turner Park (12th Street)
- 12 Alvarez Park (9th Street)
- 13 Willow Glen Park
- 14 Arneson Park
- 15 Waterfront Park (1st Street)
- 16 Turnbull Park
- 17 Overlook Park
- 18 Bridgeview Park
- 19 St. Catherine's Wood
- 20 City Park
- 21 Civic Center Park
- 22 St. Paul's Square
- 23 Fitzgerald Field
- 24 Maria/ Ribiero (Little League) Park
- 25 Duncan Graham Park
- 26 Francesca Terrace Park
- 27 Ethelree Saraiva Park



# CURRENT PARK CLASSIFICATIONS

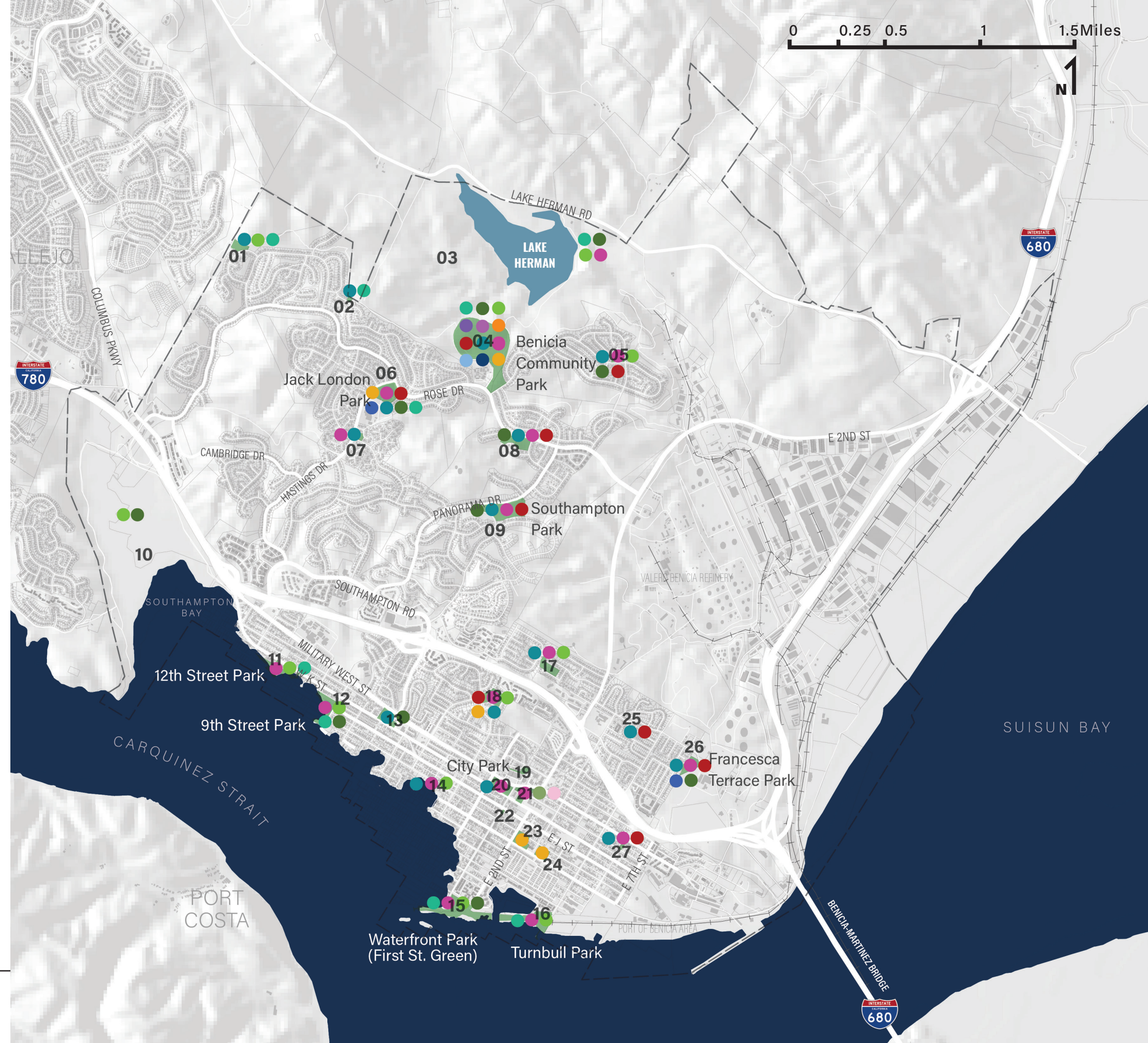
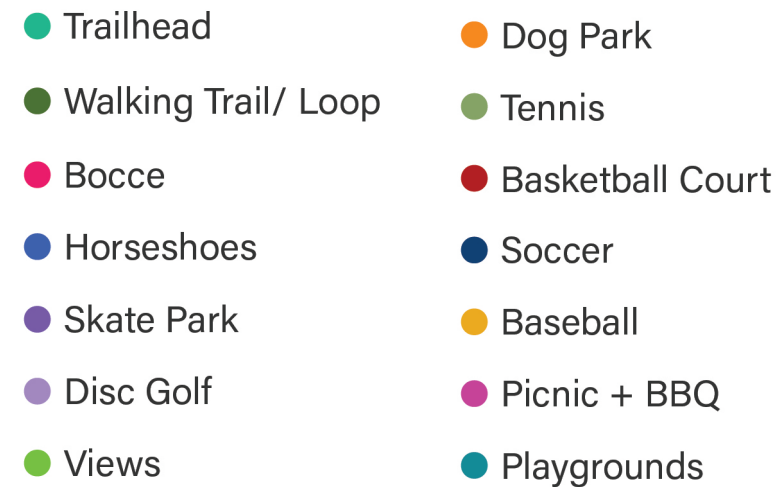
- Park classifications are assigned per the 1997 Parks Master Plan.
- Benicia Community Park is the only community park within the city. Most other parks are classified as neighborhood parks.
- Benicia has two regional parks that provide public access to natural areas.
- Additionally, this map includes small waterfront parks that are unnamed and unmapped, but are acknowledged as an important part of Benicia's waterfront area.

- Community Park
- Neighborhood Park
- Regional Park
- Street End Parks



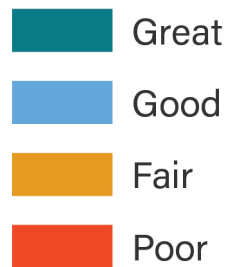
# PARK AMENITIES

- Park amenities were noted in the 2018 Parks Assessment and confirmed by the 2021 Parks Assessment.
- Each dot is a representation of the type of amenity that occurs in the park at least once. It does not indicate exact location, quantity, or condition.
- Benicia Community Park, as the sole community park in the city, has the most amenities. This includes several amenities that serve the whole city, such as the skate park and disc golf course.
- Tennis is a notable amenity that is only provided at Civic Center Park.
- Playgrounds, picnic and BBQ areas, walking loops, and views have a more even distribution throughout the city.



# PARK CONDITIONS

- Park conditions are assigned per the 2021 parks assessment.
- Parks were assessed for access and connectivity, and condition. Each park was given a numerical score from 1-5.
- The map is showing the aggregate score for all categories.
- The Site Assessment Memo provides detailed scoring and specific information for each assessed park.



# REGIONAL TRAILS+CITY BIKE NETWORK

- The Carquinez Strait Scenic Loop Trail is the shared alignment of the San Francisco Bay Trail, Bay Area Ridge Trail, and Great California Delta Trail around the Carquinez Strait.
- The waterfront of Benicia also provides access to the Bay Area Water Trail with several other planned access points.
- The Rollye Wilkerson Trail is a spur of the Ridge Trail and connects several parks on the north side of Benicia.
- Within the city limits, the Benicia Crosstown Trail is a separated multi-use path connecting much of the Southampton neighborhood and ends at the industrial area to the east.
- There are planned trails and bikeways reflected in the 2020 Active Transportation Plan (not shown on this map), which was adopted by Solano Transportation Authority, but has not yet been adopted by the City of Benicia."

- Benicia Crosstown Trail
- SF Bay Trail (Existing)
- - - SF Bay Trail (Planned)
- Bay Area Ridge Trail
- The Great California Delta Trail (Planned)
- Rollye Wilkerson Trail (Ridge Trail Spur)
- Existing Bike Network
- Class I Multi-Use Path
- Class II Bicycle Lane
- Class III Bicycle Route
- Existing SF Bay Water Trail Access Point
- Planned SF Bay Water Trail Access Point





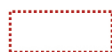


# SERVICE AREAS

## BENICIA RESIDENTS WALKING TO ALL CITY PARKS

- Service areas are defined in this map as walking distance to Benicia parks along roads and sidewalks.
- The downtown area has the most consistent access to parks.
- The Lake Herman Regional Park and the Benicia State Recreation Area have sufficient access by regional trails, which was not reflected in this map.
- Though there is a gap in service areas around the 780 and Southampton Road corridors, there is limited public access available to tennis courts, ballfields, and basketball courts at Benicia Middle School.
- Benicia also serves residents in Vallejo and beyond.

### Walking Distance







-  1/4 Mile
-  1/2 Mile
-  School

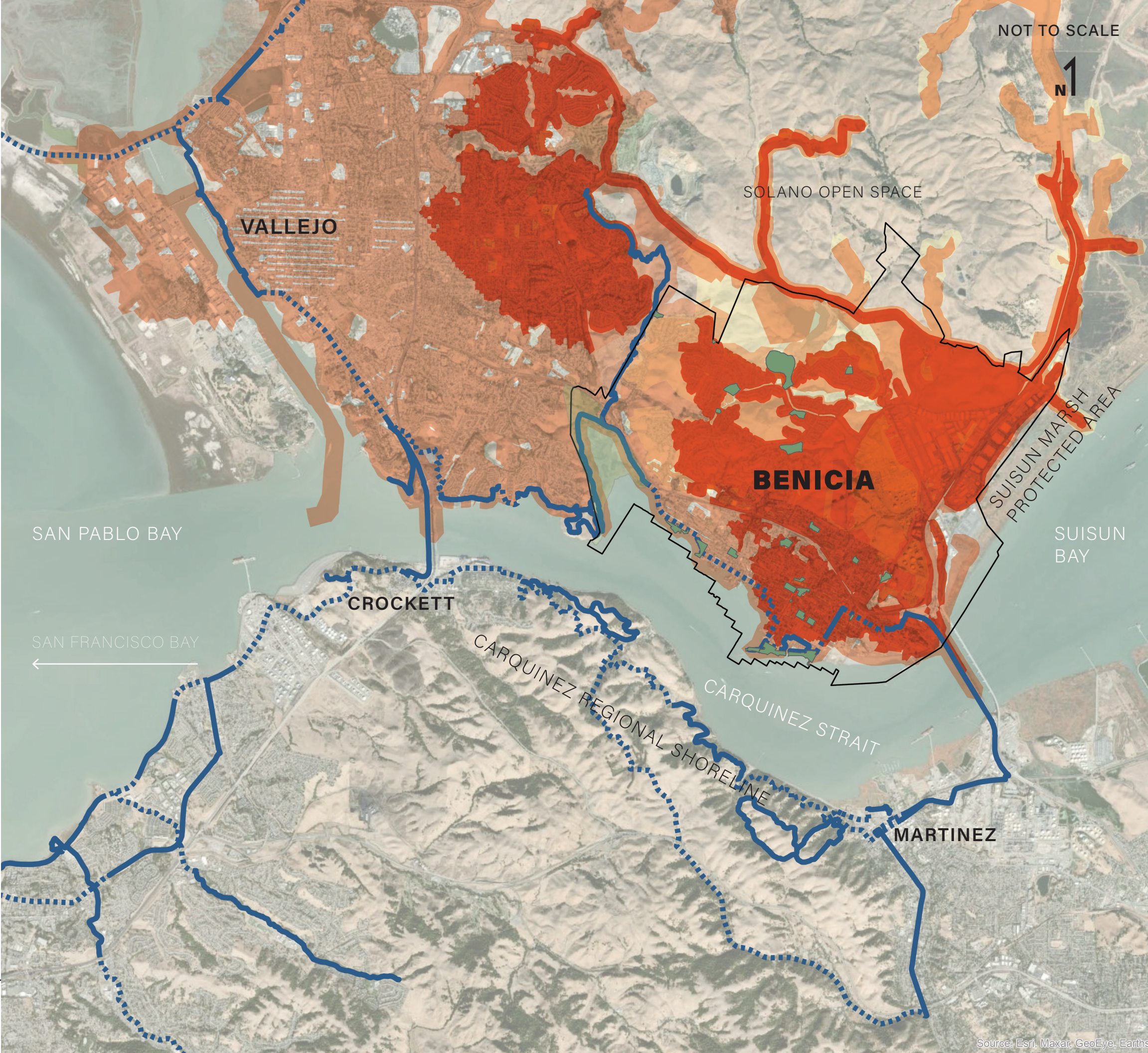


# SERVICE AREAS

## VISITING COMMUNITY PARKS FROM BENICIA AND BEYOND

- Benicia has a unique park system with many popular amenities, panoramic views, and a long waterfront. It primarily serves its own residents; however, the park system can bring neighbors into Benicia from beyond city boundaries.
- Regional trails connect the Benicia Parks System to surrounding neighbors.
- The mapped distances (5 and 10 miles) are shown along roads primarily meant for drivers to reach community parks. However, this distance is reasonable for cyclists, given the availability of bike paths and regional trails.

-  City of Benicia Boundary
-  Parks
-  SF Bay Trail (Existing)
-  SF Bay Trail (Planned)
-  5 Miles
-  10 Miles

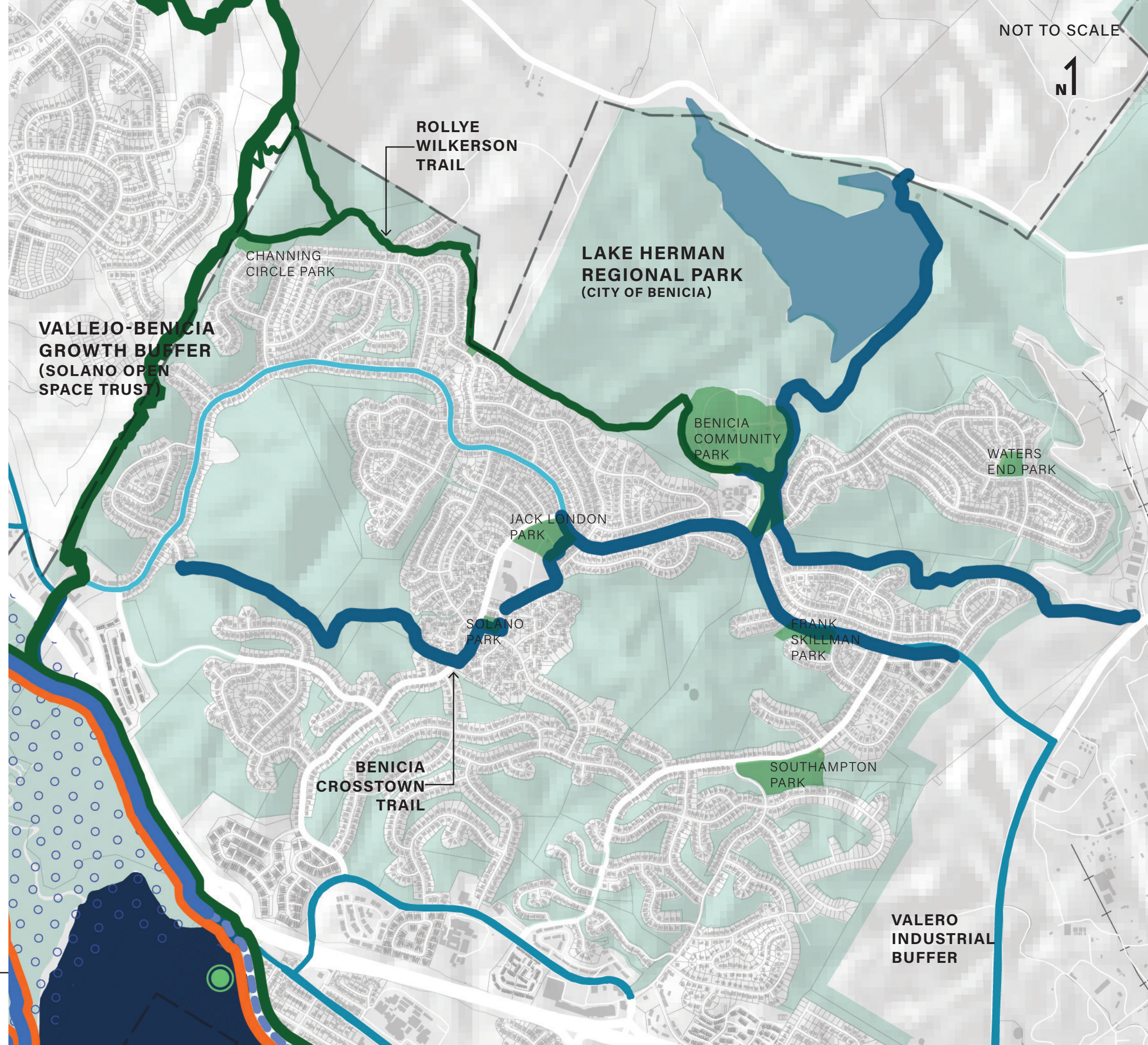


Source: Esri, Maxar, GeoEye, Earth\*

# HILLSIDE OPEN SPACE OWNERSHIP+ ACCESS

- Many fingers of open space separate residential developments in the Southampton neighborhood of Benicia.
- Rollye Wilkerson Trail is an important link between the Ridge and several other Southampton neighborhood parks, including Benicia Community Park and Lake Herman Recreation Area.

- State Protected
- Zoned for Open Space
- Existing Bike Network
- Class I Multi-Use Path
- Class II Bicycle Lane
- Class III Bicycle Route
- Benicia Crosstown Trail
- SF Bay Trail (Existing)
- SF Bay Trail (Planned)
- Bay Area Ridge Trail
- The Great California Delta Trail (Planned)
- Rollye Wilkerson Trail (Ridge Trail Spur)



# WATERFRONT PARKS

## TRAILS AND MID CENTURY SEA LEVEL RISE (24")

- Sea level rise data were acquired from the Adapting Riding Tides program of BCDC. Data were applied using a medium-high risk scenario for 2050.
- Some parts of Benicia could see effects of sea level rise by mid-century, primarily in the port area to the south, Waterfront Park, and some areas downtown.
- Though most areas along the waterfront may not see inundation, erosion is still a threat.
- Parts of the Bay Trail may also need consideration for a potential adaptation strategy.

- Street End Parks
- SF Bay Trail (Existing)
- - - SF Bay Trail (Planned)
- Sea Level Rise Inundation
- Low-Lying Area
- Existing Access Point
- Planned Access Point



# ECOLOGY

- The city of Benicia is comprised mostly of grassland and urban areas.
- Towards the waterfront, there are areas of fill in the Benicia Industrial Park, Port of Benicia, and lower downtown.
- The tree inventory shows canopy cover in parks and along streets, adding benefit to public spaces in Benicia

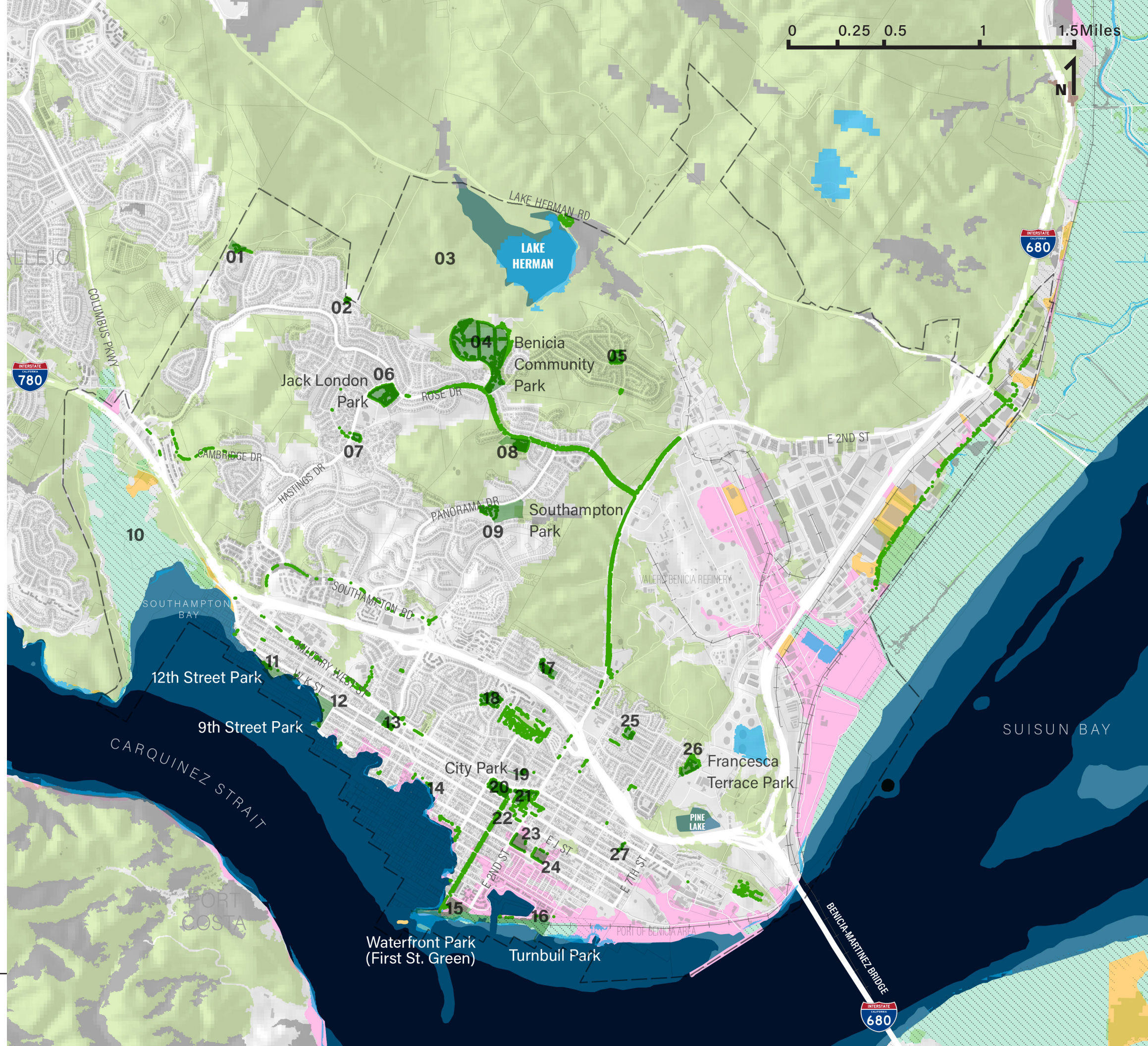
● Tree Inventory (2009)  
Source: City of Benicia

- Urban
- Buffer landscapes
- Grasslands
- Wetland/ Marsh

Source: Conservation Lands Network

- Fill
- Bayland
- Marsh
- Bay Channel/Flat
- Shallow Bay
- Deep Channel

Source: SFEI



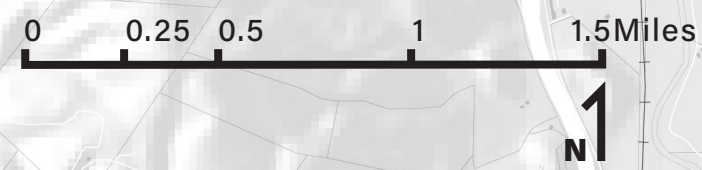
# POTENTIAL HAZARDS

- Current flood plain along with 100 year floodplain extent is shown, data provided by FEMA.
- Sea level rise is shown with medium-high risk, which is 24" by 2050. Data provided by ART, a program of BCDC.

- Sea Level Rise Inundation
- Low-Lying Area
- 100-year Floodplain



# ZONING MAP



- OS OPEN SPACE
- PS PUBLIC & SEMI-PUBLIC
- RS SINGLE FAMILY RESIDENTIAL • 0 – 7 DU/ACRE
- RM MEDIUM DENSITY RESIDENTIAL • 8 – 14 DU/ACRE
- RH HIGH DENSITY RESIDENTIAL • 15 – 21 DU/ACRE
- PD PLANNED DEVELOPMENT
- CC COMMUNITY COMMERCIAL
- CO OFFICE COMMERCIAL
- CG GENERAL COMMERCIAL
- CW WATERFRONT COMMERCIAL
- IL LIMITED INDUSTRIAL
- IG GENERAL INDUSTRIAL
- IW WATER RELATED INDUSTRIAL
- IP INDUSTRIAL PARK

- DMUMP MAP LEGEND:**
- TOWN CORE
  - TOWN CORE-OPEN
  - NEIGHBORHOOD GENERAL
  - NEIGHBORHOOD GENERAL-OPEN

